



# Blue Tongue

CAMPERS

**XH SERIES 2**

**HYBRIDS**

**LIMITLESS**

**OFF-ROAD**

**FREEDOM**



**EVERYTHING YOU NEED TO  
KNOW BEFORE YOU BUY!**



# XH SERIES 2 HYBRIDS



No limits. There was a time when having everything meant adventure was limited. Not anymore. Packed into the compact, lightweight and uber-capable XH13, 15 and 16 hybrid caravans is the ability to go further, stay longer and do it in uncompromised comfort. Everything you need for off-grid living in the ultimate off-road packages. Nothing's stopping you.

Off-Road Suspension	XH13	XH15	XH16
Coil spring, independent suspension	✓	✓	✓
Heavy-duty, off-road dual shock absorbers	✓	✓	✓
Six stud hubs	✓	✓	✓
Toe-in, toe-out adjustable	✓	✓	✓

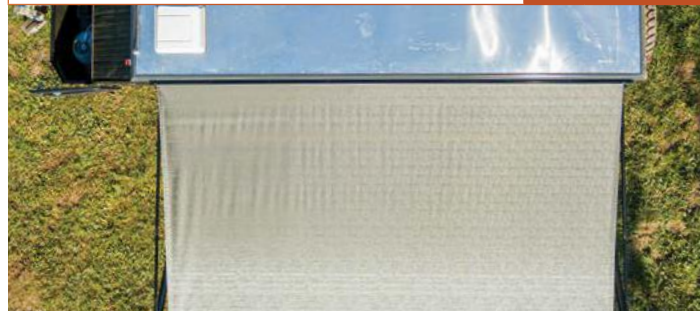


Wheels and Brakes	XH13	XH15	XH16
16in black, steel wheels	✓	✓	✓
16in ROH high load rated alloy wheels	OPT	OPT	OPT
265/75 R16 mud-terrain tyres	✓	✓	✓
Dual rear-mounted spare wheels and tyres	✓	✓	✓
12-inch off-road drum brakes	✓	✓	✓
Hand brake	✓	✓	✓

Chassis and draw bar	XH13	XH15	XH16
Heavy-duty, off-road	✓	✓	✓
Hot-dipped galvanised steel	✓	✓	✓
Fully reinforced	✓	✓	✓
Heavy-duty steel drawbar	✓	✓	✓
3500kg AL-KO off-road ball coupling	✓	✓	✓
Cruisemaster™ DO35 off-road hitch	OPT	OPT	OPT
Heavy-duty, dual wheel, swing up jockey wheel	✓	✓	✓
Padded upper stone guard	✓	✓	✓

Body Construction and Design	XH13	XH15	XH16
Pop-top, hybrid off-road caravan	✓	✓	✓
Electric pop-top roof	✓	✓	✓
Expanding bed section	✓	✓	✓
Lightweight aluminium body frame	✓	✓	✓
Aluminium sandwich panel walls	✓	✓	✓
Stainless steel hinges and fasteners	✓	✓	✓
Windows with mesh blinds and block-out screens	✓	✓	✓
LED taillights	✓	✓	✓
Premium drop-down stabiliser legs	4	4	4

Awning and attachments	XH13	XH15	XH16
Roll-out awning	✓	✓	✓
Enclosed wall and floor kit	✓	✓	✓
External shower with tent	✓	✓	✓
Aluminium awning poles	✓	✓	✓
Pegs and ropes	✓	✓	✓
Inflatable kids room extension	OPT	OPT	OPT
Inflatable annexe extension	OPT	OPT	OPT



Storage	XH13	XH15	XH16
Enclosed jerry can holders	4	4	4
Enclosed 4.5kg gas bottle holders	2	2	2
Enclosed generator storage	✓	✓	✓
Front tunnel boot	✓	✓	✓
Pantry cupboards	2	2	2
Internal drawers	2	7	7
Internal cupboards	4	6	6
Internal wardrobes		2	2
Under-lounge storage	✓	✓	✓
Under-bed storage	✓	✓	✓

Kitchen	XH13	XH15	XH16
External, built-in kitchen	✓	✓	✓
Always undercover	✓	✓	✓
Dometic three-burner stove	✓	✓	✓
Stainless steel sink	✓	✓	✓
Large pantry	✓	✓	✓
Electric water pump	✓	✓	✓
Single cutlery drawer	✓	✓	✓
Twin cutlery drawer		✓	✓
Gas/Electric Hot Water	✓	✓	✓
LED lights	✓	✓	✓



Water Storage	XH13	XH15	XH16
304 grade, stainless steel, fresh water tank	150L	200L	200L
304 grade, stainless steel, grey water tank	130L	130L	130L
External hot and cold shower	✓	✓	✓
A-frame tap	✓	✓	✓



Technology and Electrical	XH13	XH15	XH16
400W roof-mounted, monocrystalline solar	✓	✓	✓
Renogy 2000W pure sine-wave inverter	✓	✓	✓
Renogy 100Ah LiFePO <sub>4</sub> battery	3	3	3
Renogy DCC50S 50amp DC-DC charger	✓	✓	✓
Renogy One Core	✓	✓	✓
240V Victron battery charger	✓	✓	✓
Anderson plug to car	✓	✓	✓
USB Charging Points	✓	✓	✓
12V sockets	✓	✓	✓
12V socket in fridge compartment	✓	✓	✓
240V outlets	✓	✓	✓
Stereo system with Bluetooth®	✓	✓	✓
24in Digital TV with DVD player	✓	✓	✓
Digital TV Antenna	✓	✓	✓



Off-Road Comforts	XH13	XH15	XH16
Internal en suite with shower	✓	✓	✓
Thetford cassette toilet	✓	✓	✓
12-volt bathroom exhaust fan	✓	✓	✓
Queen-sized bed	✓	✓	✓
Innerspring mattress	✓	✓	✓
Slumberest Slimline mattress	OPT	OPT	OPT
AH Beard premium mattress	OPT	OPT	OPT
Kids bunks	2	2	3
Cushioned, upholstered dining area	✓	✓	✓
Adjustable height, rotating table	✓	✓	✓
LED lighting	✓	✓	✓
Bedside reading lights	✓	✓	✓
Reverse cycle air conditioning	✓	✓	✓
Dometic diesel cabin heating	OPT	OPT	OPT
Truma Gas Air Heater	OPT	OPT	OPT



Dimension & weights	XH13	XH15	XH16
Overall length	5900mm	6450mm	6645mm
Body length	3990mm	4780mm	4490mm
Travel height	2365mm	2365mm	2515mm
Travel width	2040mm	2040mm	2040mm
Campsite height	2870mm	2870mm	3020mm
Campsite headroom	1980mm	1980mm	1980mm
Campsite width	3270mm	3270mm	3270mm
Tare weight	1945kg	2210kg	2190kg
ATM	2700kg	2700kg	2700kg
Ball weight, unladen	130kg	150kg	160kg
Load capacity	755kg	490kg	510kg



# EXPANDING FREEDOM

**Freedom. Isn't that really what camping's all about? Freedom to escape the mundane, to explore places less travelled, and to disconnect from the things that stress us out. The XH13, 15 and 16 give you freedom to do it in comfort and stay off-grid as long as you want.**



That's what's driven Blue Tongue's latest innovation in hybrid caravans. Built with the versatility and off-road capability of a camper trailer but with all the inherent comforts of a caravan, the XH Series 2 represents complete freedom. You can take them anywhere, escape in total comfort, without any pressure to find civilisation before you're ready.

What's key to the XH Series 2 Hybrids? Blue Tongue's common-sense design, practical features and top-quality components are hallmarks of the XH13, 15 and 16. These aren't campers that do flashy for the sake of flashy, but self-contained adventure-vehicles that have had every inch of their compact, go-anywhere design meticulously planned. They have electrotonically operated pop-top roofs, fold-out bed extensions, and everything you need to camp self-sufficiently for as long as you want.

The XH13's compact body conceals a considerable living space and packs everything you need into a compact, lightweight package. The extra length of the XH15 and 16 adds storage options, sleeping options, an internal sink, and more room to relax at camp.



## Convenience and outdoor living

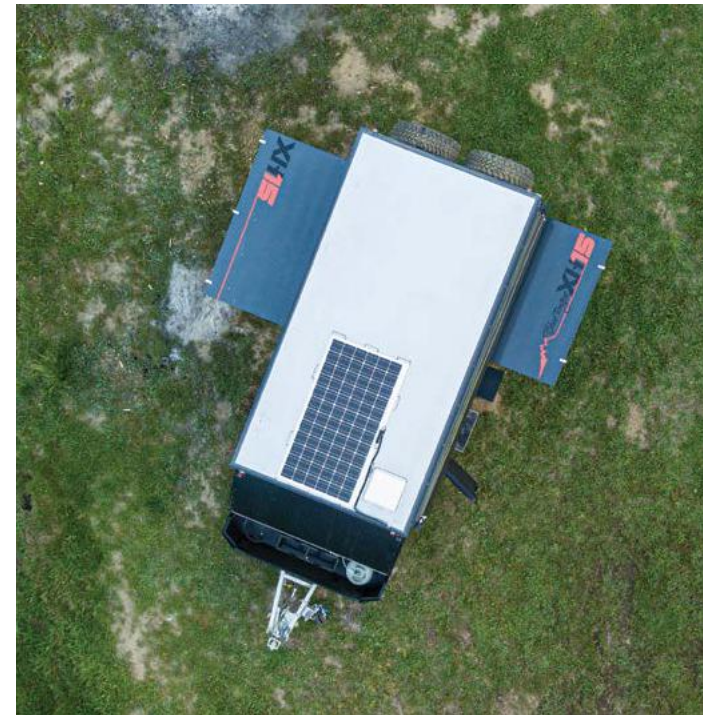
It starts with an all-weather kitchen that you can use anywhere, anytime. Set into the passenger side, outside wall of both models, the kitchen is always ready. It doesn't need to be set up, slid out, unfolded or assembled. It's just there, waiting. If you need to make a quick stop while barrelling west along the blacktop, you can simply lift the door and make a coffee. If it's raining, no problem – the top-hinged door provides instant shelter. If your boots are deep in thick red dirt and you find an oasis for lunch, there's nothing more relaxing than knocking a meal together under the shade of a boab,

pandanus or melaleuca.

The kitchen features a tall deep pantry, a pair of generous overhead cupboards, and an inbuilt Dometic stainless steel three-burner stove. Plus, there are two more large drawers under the kitchen that slide on stainless runners and are accessible even when the kitchen is closed. The sink is plumbed with hot and cold water, and the cooking area has LED lighting designed to eliminate any shadows. The caravan fridge slide is

located forward of the kitchen. It is almost a metre long and a half-metre wide and easily fits the latest 95L chest fridges.

The XH Series 2 caravans have everything you need and more than enough storage to eat well wherever you end up camping. The kitchen location, outside the hybrid caravans, encourages outdoor living rather than hiding away inside after the sun goes down. The roll-out awning is simple to use and goes in or out in an instant.



If you need to extend your living space, a complete set of canvas walls is included. The walls slip easily into place along sail-track runners. Plus, there is enough light under the awning to read well past sunset, and there is no need to go inside to grab another drink when you're sitting around the fire.

Whether you're travelling as a couple or a family, there is a place for everything making it easy to keep organised. Storage is comprehensive throughout both

models, including 11 large drawers and two full-height cupboards surrounding the master bed, two large drawers beneath the internal sink, and more compartments under the bed base.

## For rest

Key to the XH Series 2 versatility is the fold-out queen bed extension on the driver's side, which doesn't waste any space. It offers full access to both sides of the bed and more space for

other modern conveniences. With an innerspring mattress standard, there's no compromise on comfort.

Each model is flexible enough for the family, too. The XH13 or 15's dinette converts quickly and easily into a lower bunk, with another above that seamlessly folds out of the way when it's not needed. No kids? No worries, the top bunk is an ideal luggage shelf, and the dinette is always set. The XH16's third bunk makes it perfect for growing families, and the







outdoor eating area means there's room for the whole family to eat together.

As more and more campsites call for self-contained camping to protect Australia's fragile ecosystems, the XH hybrids are well prepared. Both feature fully enclosed ensuites with Thetford cassette toilets. With a Truma gas and electric hot water system, you'll be able to camp in complete comfort. With 200-litres of fresh water at hand supplemented by a 130-litre grey water tank, you won't even leave a trace.

### Off-Grid

You'll never have to move from a campsite due to lack of power. The Blue Tongue XH Series 2 hybrids don't mess around, and there'll be no need to upgrade. Maintaining the highest levels of safety, all three models come with three 100ah Renogy lithium batteries. They're supplemented by 400-watts of roof-mounted solar and a 2000-watt Renogy pure sine wave inverter. Espresso coffee at camp is no longer a pipedream. Partnered with sophisticated and highly customisable Renogy One Core touchscreen controller and 50amp DC-DC charger that can also be controlled remotely via Bluetooth®, there's no limit to what you can do. All the lights are energy-efficient LEDs, and there's a generator slide at the front of the van if you need the flexibility to power anything, anytime.

### Built Tough

Rough places are where these hybrid caravans are destined to go. For all the comfort and convenience, this is a dedicated off-road caravan that is ready for anything. They're built on heavy-duty, galvanised steel chassis with off-road, independent coil spring suspension and dual shock absorbers on each side. Both come fitted with 275/75 R16 mud terrain tyres with two spares on the back.

Thanks to the strong and lightweight aluminium body frame and floor and wall panels, the whole van weighs no more than a standard steel-bodied camper trailer. The hybrids are light enough to take anywhere. And, with up to 755kg payload capacity, you can be confident in packing everything you need to camp for a long time and a good time.

The Blue Tongue XH hybrids are clever, strong and capable off-road caravans any way you look at it. With an XH Series 2 hybrid in tow, you'll have the ability to travel anywhere in Australia, making the most of the best campsites in the most remote areas. You'll be able to camp self-contained and self-sufficiently for as long as you like, confident in the fact you've got everything you need to be comfortable, relaxed and well equipped. That's freedom.







## WHO IS BLUE TONGUE CAMPERS?

Blue Tongue Campers was established over a decade ago in the leafy southern Sydney. Always with an aim of providing Aussie travellers and families with high-quality but affordable camping products, the company has partnered with some of the industry's leading manufacturers and providers, from Australia and around the world, to build some of the most practical campers on the market.

At the helm is Karl Geddes who, after a career in the building industry, decided he much preferred accomodation under canvas, rather than bricks and mortar. He's a camper himself and has travelled extensively in his own camper, not just to prove their worth, but to enjoy the best country in the world.

Find out more at [bluetonguecampers.com.au](http://bluetonguecampers.com.au)



### HEAD OFFICE AND SHOWROOM

1 Sheridan Close  
Milperra, NSW, 2214

PHONE: (02) 8544 0976

EMAIL: [info@bluetonguecampers.com.au](mailto:info@bluetonguecampers.com.au)

FACEBOOK: [@bluetonguecampers](https://www.facebook.com/bluetonguecampers)

INSTAGRAM: [@bluetonguecampers](https://www.instagram.com/bluetonguecampers)

X: [@bluetonguecamp](https://twitter.com/bluetonguecamp)

NSW MOTOR DEALERS LICENSE NO.  
MD 27739

[BLUETONGUECAMPERS.COM.AU](http://BLUETONGUECAMPERS.COM.AU)

### DEALERSHIP ADDRESS:

